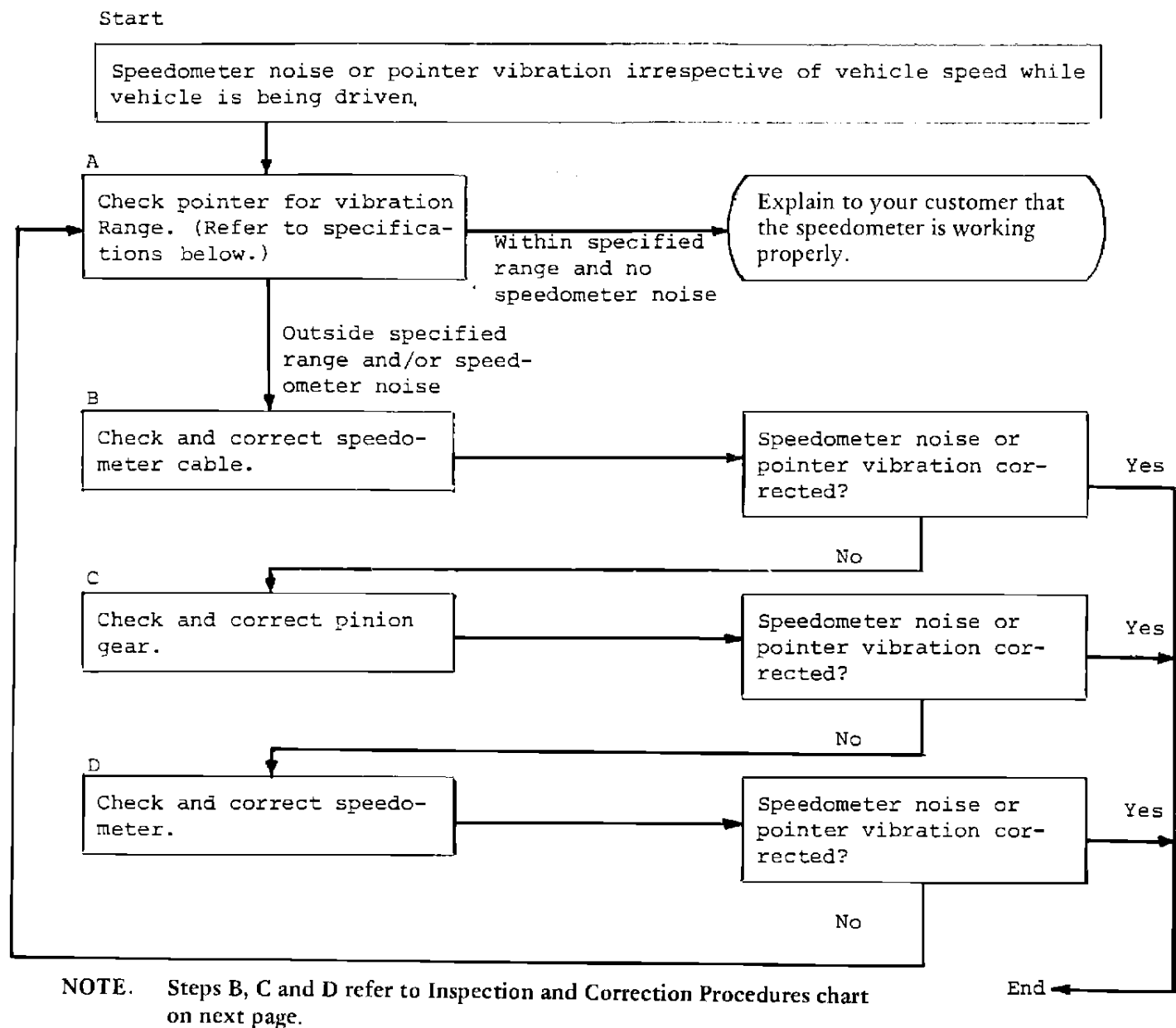


Trouble Shooting Chart - Speedometer



INSPECTION ITEM (A)

Specifications of speedometer indicator (with vehicle in operation)

- (1) Allowable vibration range:

Plus-minus 3 km/h (2 MPH) [Above 35 km/h (22 MPH)]

INSPECTION AND CORRECTION PROCEDURES

Parts to be Inspected Inspection Criteria Correction and Inspection Item Procedures

- (1) Improper connection with pinion Reconnect cable gear/speedometer.
- (2) Evidence of wear at end of inner See note a cable.

- (3) Sharp edges at end of inner cable See note b which is connected to speedometer.

Speedometer Cable (B)

- (4) Lack of lubricant on inner cable. Add lubricant
- (5) Sharp cable bend, improper cable See note c routing or tie wraps too tight around cable.
- (6) Rust formation, breakage, wear or Replace cable damage of inner cable.

Pinion Gear (C) (1) Worn or cracked gear tooth. Replace

Speedometer (D) (1) Foreign particles (i.e., metal chips, See note d, grease or oil) at or around magnet.

NOTES:

- a) Remove inner cable from outer case, then grind off approximately 2mm from the end of the cable that is connected to the speedometer. Make certain all sharp edges are removed.
- b) Remove inner cable from outer case, then remove any sharp edges from end of the inner cable that is connected to the speedometer.
- c) Readjust cable or tie-wraps so that any sharp cable bends are eliminated. Refer to Appendix for the proper cable routing for each model.
- d) If the foreign particles are rust, metal chips, etc., clean with compressed air; if the contamination is grease, replace the speedometer and speedometer cable; if the contamination is oil, replace the speedometer, speedometer cable and/or pinion gear.