



NISSAN MOTOR CORPORATION IN U.S.A.

Post Office Box 191
Gardena, California 90247
Telephone: (213) 532-3111

SERVICE BULLETIN

Reference: TECHNICAL BULLETIN TS86-112		Date: June 26, 1986
Classification: Exhaust Gas (O2) Sensor	Section: Emission Control	Models: 1982 Gasoline Maxima

SPECIAL SERVICE CAMPAIGN, EXHAUST GAS SENSOR - 1982 NON-TURBO 280ZX, GASOLINE MAXIMA

INTRODUCTION

This bulletin describes procedures for the inspection and replacement of the exhaust gas sensor on 1982 Non-Turbo 280ZX (S130) and Gasoline Engine Maxima (910) vehicles, except those presently registered in California.

BACKGROUND

Nissan Motor Co., Ltd. has determined that the current criteria for replacement of the exhaust gas sensor should be changed to assure proper emission control. The current inspection procedure for checking the exhaust gas sensor calls for replacing the sensor if the inspection lamp on the EFI control unit goes ON and OFF five times or less during 10 seconds. Nissan has revised the inspection procedure to require that the sensor be replaced if the inspection lamp goes on and off ten times or less during 10 seconds. This revised procedure applies only to 1982 Non-Turbo 280ZX (S130) and Gasoline Engine Maxima (910) vehicles, except those presently registered in California, and is to be used both for this campaign and anytime the exhaust gas sensor is inspected.

Nissan will notify all owners of the affected vehicles by letter. They will be asked to bring their vehicle to a Nissan dealer for free inspection and, if necessary, replacement of the exhaust gas sensor. A copy of the owner's letter is shown on page EC-34 for your reference.

Nissan has undertaken this voluntary service campaign to assure that air pollution is not aggravated by its vehicles.

CHANGE TO SERVICE MANUALS

In conjunction with this service campaign, pages MA-13 and EF&EC-43 of the 1982 280ZX Service Manual and pages MA-15 and EC-13 of the 1982 Maxima Service Manual (the step which refers to counting the number of times the inspection lamp on the EFI control unit goes ON and OFF) should be revised as follows:

Make sure that inspection lamp on control unit goes on and off more than 10 times during 10 seconds.

Please correct your copies of the service manuals by hand.

AFFECTED MODELS

All 1982 Non-Turbo 280ZX (S130) and Gasoline Engine Maxima (910) vehicles are included in this service campaign except those presently registered in California. This includes vehicles which were originally registered in California but are now registered in another state.

TABLE 1

MODEL AFFECTED VIN RANGE

1982 280ZX Non-Turbo

- 2 Seater JN1HZ04S()CX 430008 TO 466410
- 2+2 Seater JN1HZ06S()CX 420005 TO 437225

1982 Gasoline Maxima

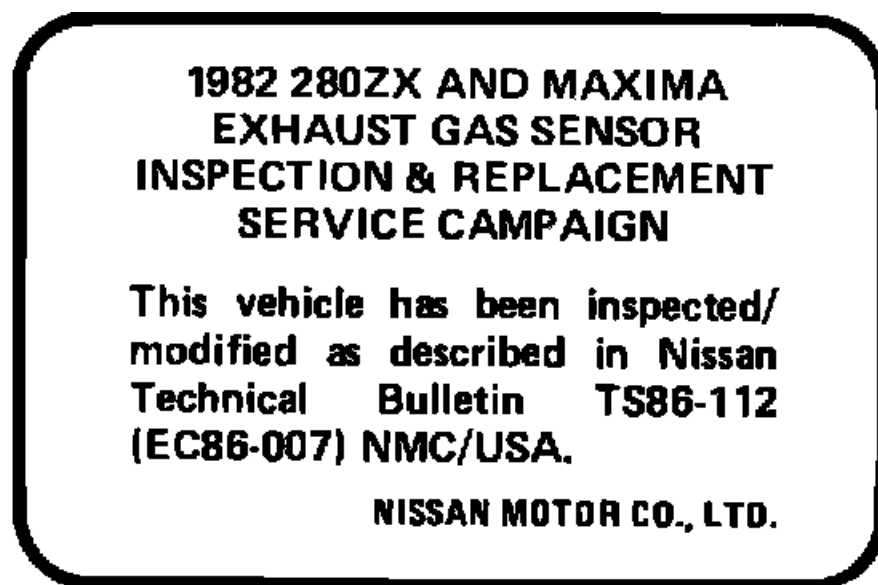
- Sedan JN1HU01S()CT 025006 TO 053673
- Sedan JN1HU01S()CX 900001 TO 904255
- Wagon JN1HU05S()CX 020010 TO 028150

NOTE: () = Check digit

DEALER RESPONSIBILITY

1. The dealer is responsible for inspecting the exhaust gas sensor and, if necessary, replacing it for each vehicle which falls within the affected VIN range of this campaign which for any reason, enters his service department. This includes vehicles purchased from private parties or presented by transient (tourist) owners, and vehicles on dealer used car lots.

FIGURE 1:



2. The dealer must install the underhood label (Figure 1) next to the existing Emission Control Information label when the inspection/correction has been completed. Twenty-five (25) of these labels are enclosed with this Technical Bulletin. Additional labels may be obtained through regional offices.

PARTS INFORMATION

Dealers should order parts through the normal parts distribution system in anticipation of their local demand.

TABLE 2

DESCRIPTION PART NUMBER

Oxygen Sensor Assembly 22690-F5300

Air Flow Meter Plug 22681-D8100

SERVICE PROCEDURE

The procedure for inspecting the exhaust gas sensor is the same as printed in the Service Manuals for the 1982 Non-Turbo 280ZX and Gasoline Engine Maxima with the exception of the revision to the step involving counting the number of times the inspection lamp on the EFI control unit goes on and off. The appropriate pages in the Service Manuals with the change incorporated are printed below for your convenience.

WARRANTY CLAIM INFORMATION

A service campaign claim may be entered via DATANET or S-1-S. A peel-off label, imprinted with the owner's name, address, vehicle identification number, campaign description, and PNC is included in the owner's notification package. Remove this label and apply it directly to the repair order to save the service writer's time and ensure accurate, readable information for entry into DATANET or onto an S-1-S Warranty Claim.

TABLE 3:

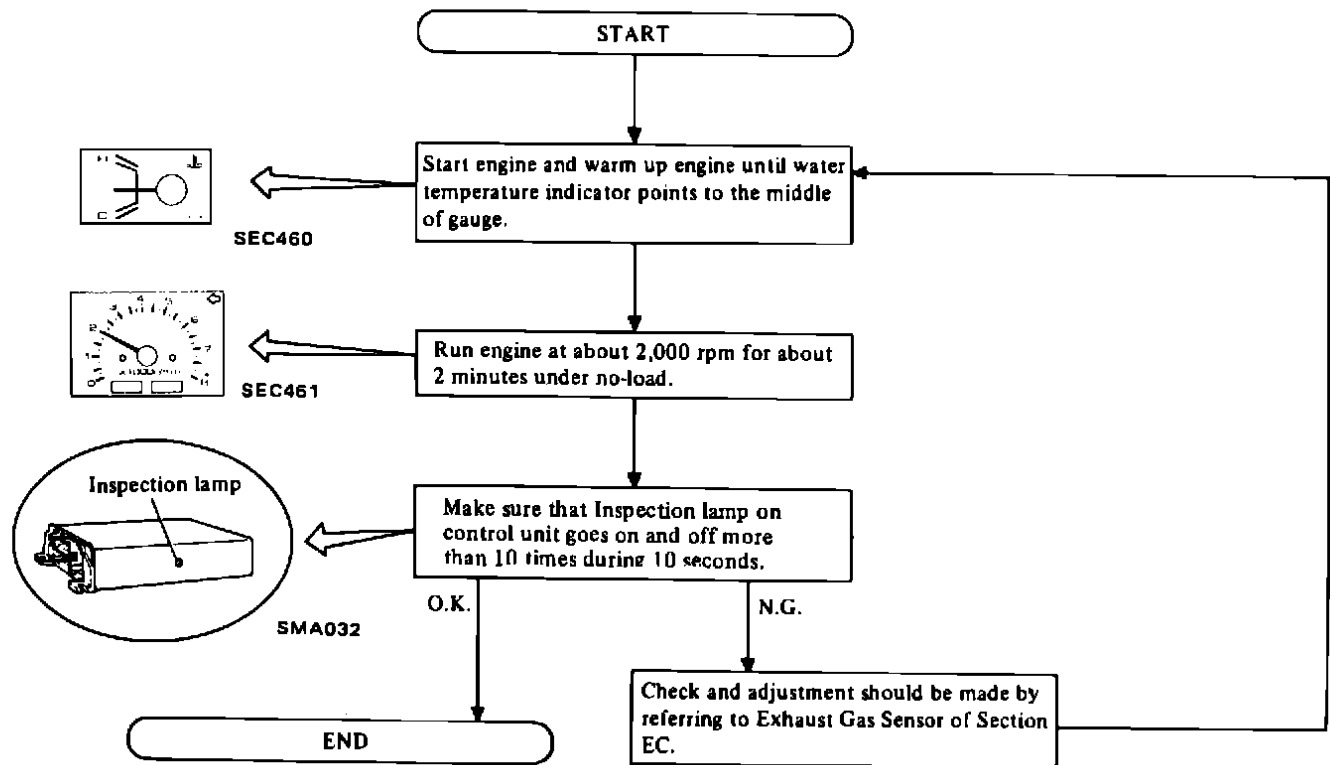
CS	PNC	CT	OPERATION	OP CODE	FLAT RATE	
					MAXIMA	280ZX
9Y	P6051	99	Inspect exhaust gas sensor	P60510	0.3	0.3
			Replace exhaust gas sensor	P60511	0.6	0.6
			■ Includes: P60510			
			Replace EFI harness	P60512	1.0	0.7
			Replace control unit	P60513	0.3	0.3
			Adjust idle CO%	P60514	1.1	0.9
			Replace air flow meter	P60515	0.5	0.4

Click on the above image to enlarge

The operations listed in Table 3 below may be claimed in combination, depending on components replaced.

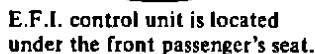
1982 Maxima (910)

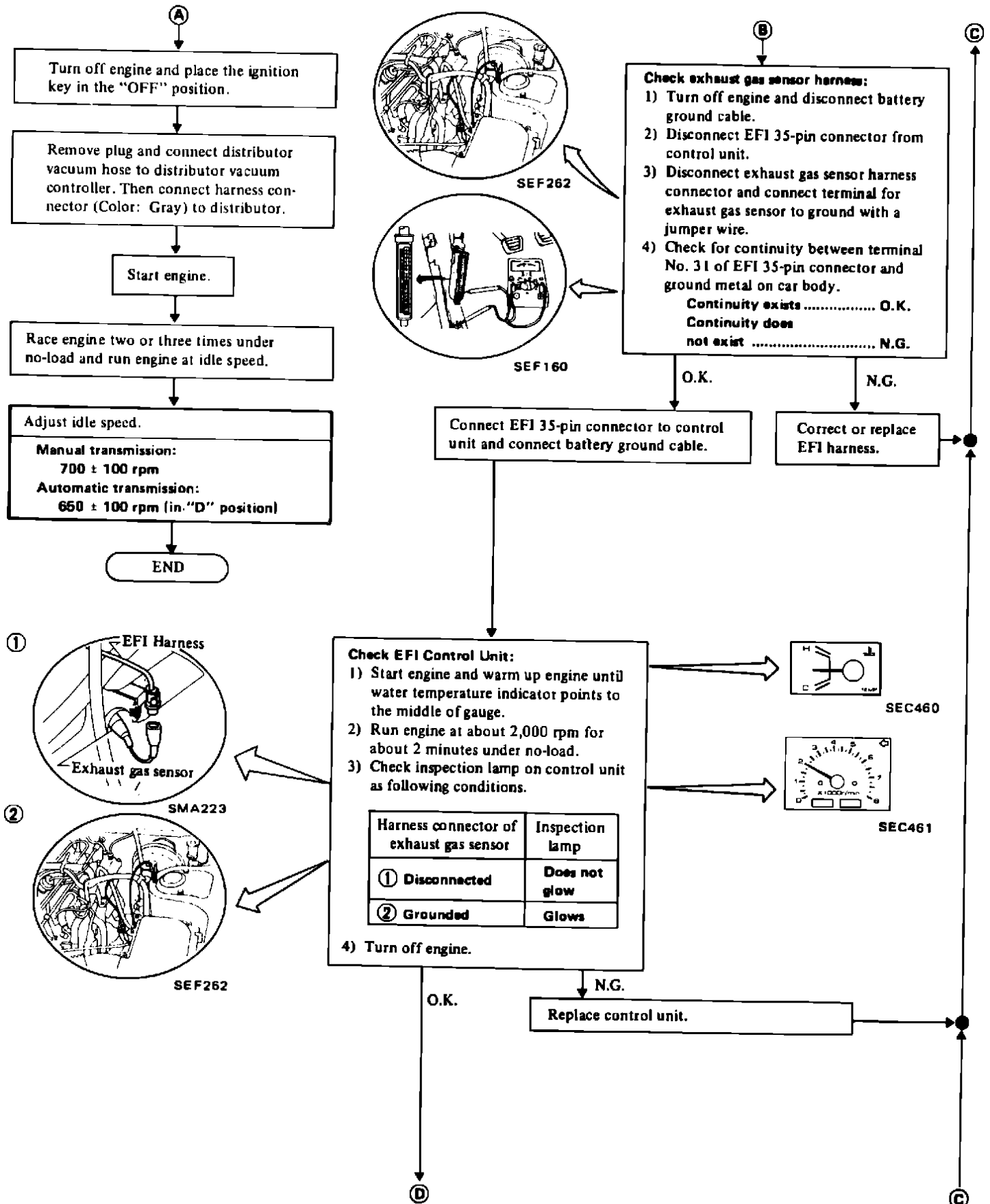
Maintenance procedure



Click on the above image to enlarge

Inspection procedure





Note:

Keep throttle valve switch harness connector at least 10 cm (3.9 in) away from high tension cable, to prevent malfunction due to reception of external noise.

Note:

- a. The idle mixture ratio of EFI car is set so lean that "CO" % remains almost unchanged when adjustment is made under normal condition. Therefore, when adjusting idle mixture ratio, to distinguish variation in "CO" %, a full enrichment must be temporarily given to idle mixture setting to make it richer.
- b. Make lead wire as follows:
Use flat plate terminals 3 mm (0.12 in) wide, 0.8 mm (0.031 in) thick as male terminals. Place flat plate terminals parallel with each other and keep distance between inside faces 2 mm (0.08 in). Solder lead wire to each terminal and wrap insulation tape around soldered portion.

Note:

- a. When measuring "CO" %, insert probe into tail pipe more than 0.4 m (16 in).
- b. Use "CO" meter after it is fully warmed up.

Note:

The air by-pass screw which has been preset at the factory should be adjusted to lower exhaust emission as directed by official inspections.

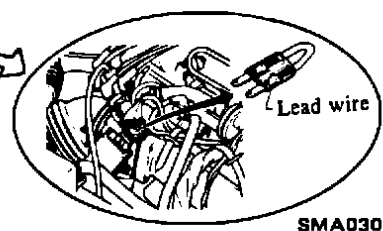
The seal plug which seals air by-pass screw should not be removed during routine maintenance.

Adjusting mixture using other than the following method may violate Federal or other State and Provincial laws.

Note:

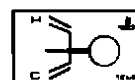
After drilling, be sure to remove shavings and dust.

Disconnect throttle valve switch harness connector and connect a lead wire between terminals No. 24 and No. 30 of throttle valve switch harness connector.



Start engine and warm up engine until water temperature indicator points to the middle of gauge.

Race engine two or three times under no-load, then run engine at idle speed.



Check "CO" % with "CO" meter

Idle "CO" %
[With full enrichment and
exhaust gas sensor harness
connector disconnected
Less than 5%]

O.K.

N.G.

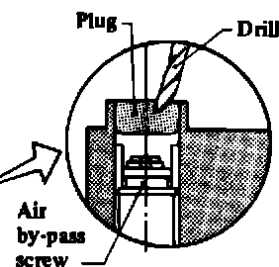
Does engine
run smoothly?

Yes

No

Turn off engine and remove air flow meter from car.

Drill a hole in seal plug which seals air by-pass screw and remove seal plug.



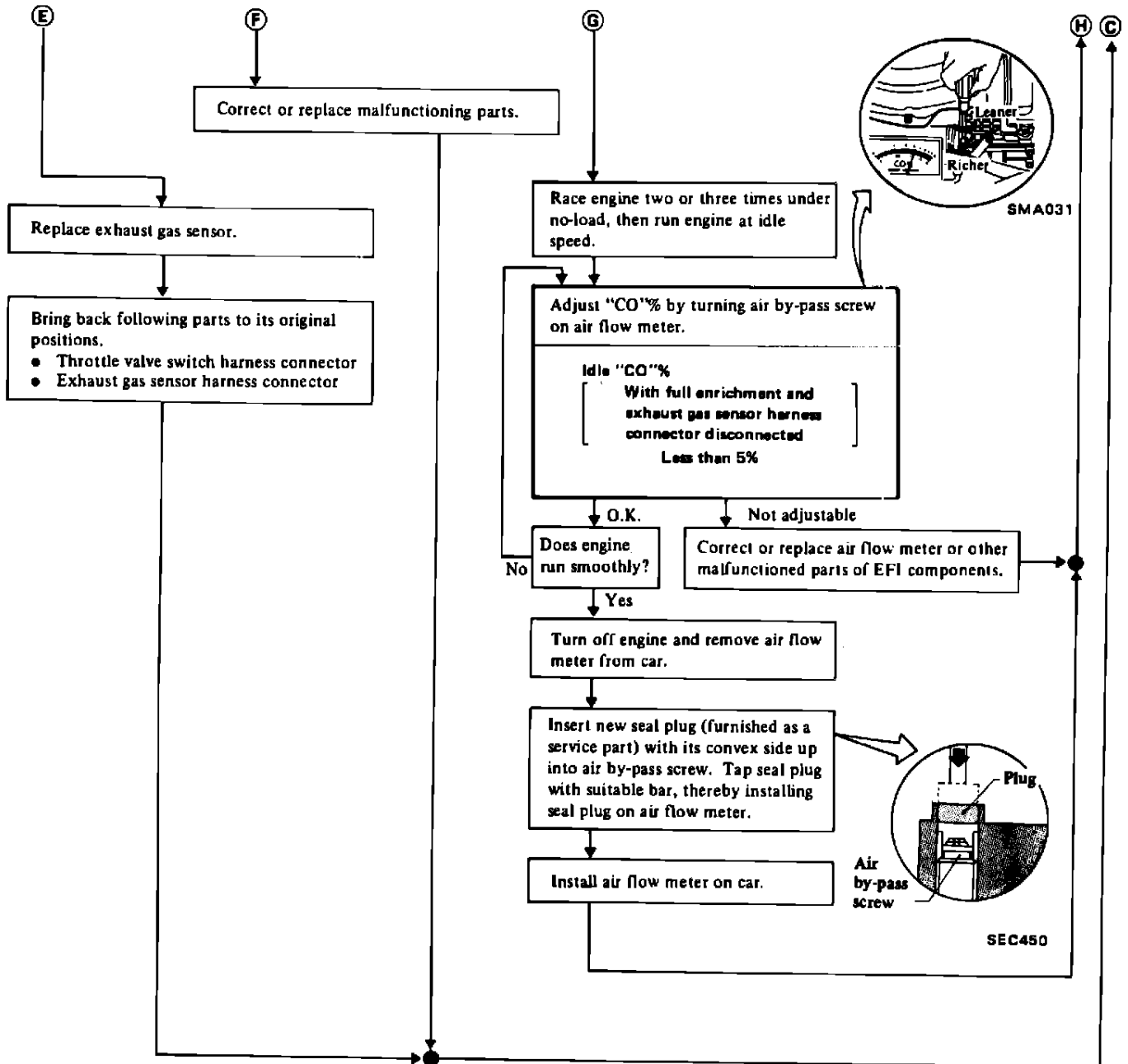
Install air flow meter on car. Start engine and warm up engine until water temperature indicator points to the middle of gauge.

Check the following:

- Following hoses for proper connections.
Vacuum hoses
Blow-by hoses
Air regulator hoses
Air duct hoses
Canister purge hoses
- Air leaks at throttle chamber mounting and intake manifold.

O.K.

N.G.



Click on the above image to enlarge

CHECKING EXHAUST GAS SENSOR

Preparation When checking exhaust gas sensor, make sure that the following parts are in good order.

- ^ Battery
- ^ Ignition system
- ^ Engine oil and coolant levels
- ^ Fuses
- ^ EFI component parts
- ^ EFI harness connectors
- ^ Hoses
- ^ Oil filler cap and oil level gauge
- ^ Valve clearance, engine compression

OWNER LETTER

Owner Letter for 1982 Non-Turbo 280ZX/Gasoline Engine Maxima Voluntary Service Campaign

Dear Datsun Owner:

Our records show that you are the owner of a 1982 Non-Turbo 280ZX or Gasoline Maxima equipped with emission control systems designed to meet U.S. requirements. If you no longer own this vehicle, or if your name or address have changed, please fill out the enclosed postage-paid reply card and mail it to us so we can correct our records.

Nissan Motor Co., Ltd., the manufacturer of Datsun cars, has determined that the replacement specification for the exhaust gas sensor should be revised to assure the proper exhaust emission performance of your vehicle. The maintenance instruction provided with your vehicle requires an inspection of the sensor at 30,000 miles. The dealer will replace the sensor at no expense to the owner if the sensor does not perform in accordance with certain criteria. We have determined that the performance of the sensor may deteriorate to an extent that emissions control is reduced even though the replacement specification has not been met. We are therefore changing the replacement specification so that proper emission performance will be assured.

If your vehicle now has more than 30,000 miles, please contact the authorized Nissan dealer of your choice and make an appointment for a free inspection. If your vehicle has less than 30,000 miles, please wait until it has 30,000 miles before contacting the dealer. If the sensor meets the new replacement specification, the dealer will install a new sensor, free of charge. Nissan believes that a service campaign is the best way to assure that our vehicles do not aggravate air pollution.

All authorized Nissan dealers have replacement parts and revised service instructions which include the new sensor replacement specification. Please make an appointment for this free service which will take about 45 minutes to perform.

Please bring this notice with you when you keep your service appointment for it contains pre-printed claim information which will assist the dealer. If the dealer fails, or is unable to make the necessary repairs free of charge, you should immediately contact the Consumer Affairs Office at the appropriate Regional Office listed on the front of the Warranty Information Booklet. Or, you may contact the National Consumer Affairs Office, Nissan Motor Corporation in U.S.A. at P.O. Box 191, Gardena, California 90247, phone number (213) 532-3111.

If the vehicle still is not repaired free of charge within a reasonable time, you may notify the Manufacturers Operation Division, Office of Mobile Source, U.S. Environmental Protection Agency, EN340, 401 M. Street S.W., Washington, D.C. 20460, or telephone (202) 382-2495. EPA will notify Nissan of any concerns related to this matter not resolved by our service organization and we will take the necessary corrective action.