



# SERVICE BULLETIN

Classification:

TE02-010

Reference:

NTB02-061

Date:

June 10, 2002

## MIDTRONICS BATTERY TESTER UPDATE

**APPLIED VEHICLES:** All Nissan

### SERVICE INFORMATION

The Midtronics tester is used to conduct tests on Nissan Original Equipment batteries, both Japan-built and U.S.-built batteries. When using this tester to test batteries built in Japan, please note: The Cold Cranking Amp (CCA) setting has been changed.

- All 80D26 batteries are to now be tested at 445 CCA
- All 80D23 batteries are to now be tested at 490 CCA

Two self-adhesive labels, with the updated CCA settings printed on them, were mailed to each dealer. Refer to the Service Procedure (below) to affix one label to each Midtronics™ Battery Tester. For additional labels, contact DDS Distribution Services at 1-800-247-5321.

Please enter the following CCA setting when testing the listed batteries:	
Battery Type* (Japan Built)	CCA Setting
80D23	490
80D26	445
*Stamped on battery top	

TP020265a

Label with updated CCA settings

**NOTE:** Nissan Original Equipment batteries that were built in Japan can be identified by the Japanese Industrial Standard (JIS) number located on top of the battery case.

## SERVICE PROCEDURE

1. Use Isopropyl alcohol and a soft cloth to clean the lower left area of the Midtronics™ Battery Tester (see Figure 1).

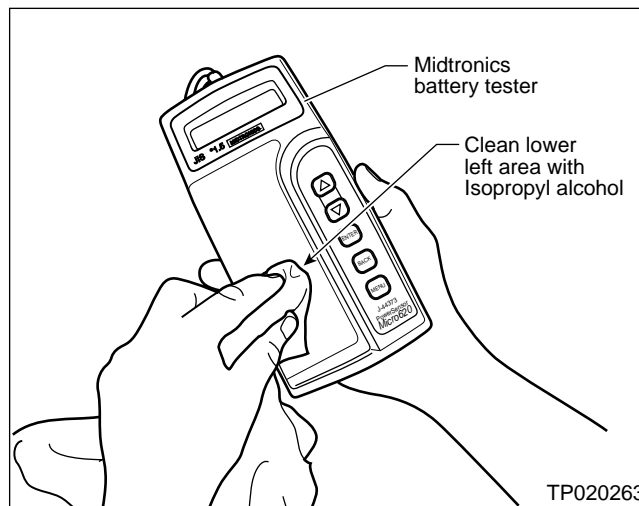


Figure 1

2. Allow the cleaned area to completely dry.
3. Peel off a self-adhesive label (see Figure 2a) being careful not to:
  - Allow the self-adhesive portion of the label to stick to itself
  - Permit dirt, debris, etc. to come in contact with the adhesive
  - Touch the adhesive

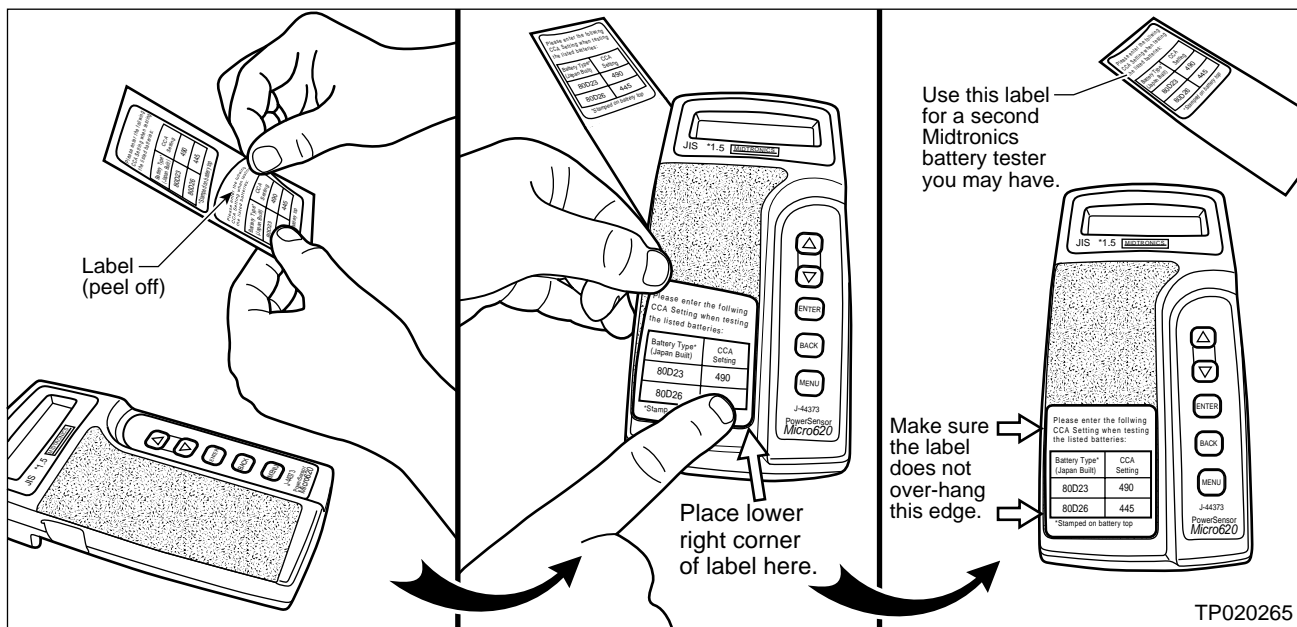


Figure 2a

Figure 2b

Figure 2c

4. Affix the label to the tester by:
  - First, placing the lower right corner of the label at the point shown in Figure 2b.
  - Then, evenly and firmly pressing the label down until it is fully adhered to the tester
5. Apply the second label to another Midtronics™ battery tester (if you have another tester).